

# UpRight

# AB46

## SELF-PROPELLED BOOM LIFT

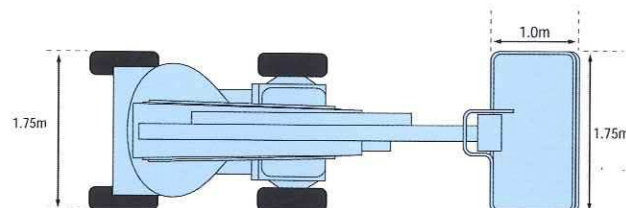
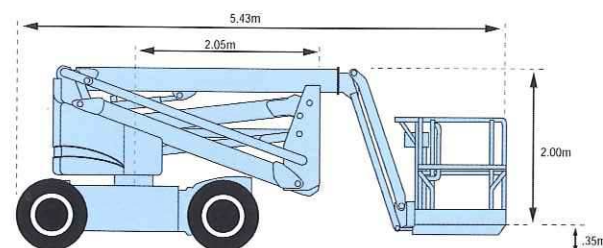
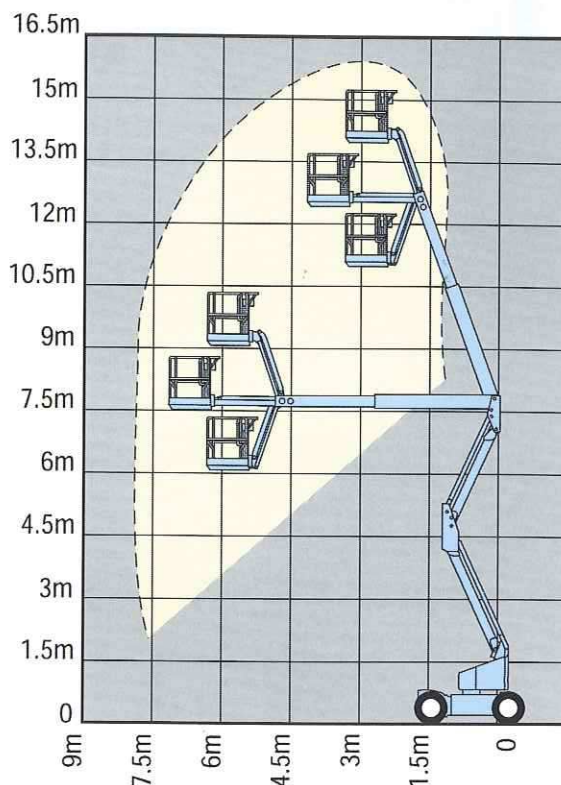


- 16m maximum working height
- 8m outreach at 7.5 m clearance height
- Electric or diesel power options
- True multi-function controls and 5.6km/h travel speed get operators to the job fast
- 1.5m, jib with 140° action gives maximum versatility
- Spacious 1.75 x 1m platform with easy-entry flip-up gate
- Tight 0.6m inside turning radius
- 160° powered platform rotation

# UpRight

Courtesy of Crane.Market

SPECIFICATIONS	ELECTRIC	DIESEL
Max. working height	16.0m	16.0m
Max. platform height	14.0m	14.0m
Max. working outreach	8.0m	8.0m
Platform front outreach	7.5m	7.5m
Clearance at max. outreach	7.6m	7.6m
Jib length	1.5m	1.5m
Jib operating arc	140°	140°
Platform capacity	227kg	227kg
Platform rotation	160°	160°
Turret rotation (non-continuous)	360°	360°
Width	1.75m	1.75m
Stowed length	5.43m	5.43m
Overall height	1.99m	1.99m
Inside turning radius	0.6m	0.6m
Outside turning radius	3.0m	3.0m
Travel speed - <i>stowed</i>	0 – 5.64km/h	0 – 5.64km/h
Travel speed - <i>elevated</i>	0 – 0.8km/h	0 – 0.8km/h
Gradeability	30%	30%
Cycle time to full height	106 seconds	106 seconds
Power source	8 x 6V, 350 AH batteries	Kubota D905 water-cooled
Controls	Electric, proportional	Electric, proportional
System voltage	48VDC	12VDC
Tyres (air filled)	9.5 x 16.5 10 ply	10 x 16.5 10 ply
Wheel base	1.85m	1.85m
Wheel track	1.50m	1.50m
Ground clearance	0.15m	0.15m
Gross weight	6,486kg	6,414kg



## STANDARD FEATURES

- |                           |   |
|---------------------------|---|
| 1.5m jib with 140° action | Multi-function, variable speed controls |
| Powered platform rotation | Proportional joystick drive controls    |
| 1.75 x 1.0m platform      | Zero tailswing boom design              |
| Clamshell-type entry gate | Drive direction indicator               |

## OPTIONAL EXTRAS

- |  |                          |
|--|--------------------------|
| Petrol/dual fuel power                   | Diesel exhaust scrubber  |
| Motion alarm and flashing beacon         | Battery charge indicator |
| Spare battery module assembly (electric) | Poly-filled tyres        |

**CE** This product is available with the CE mark confirming compliance with all relevant European Machinery Directives.

MANUFACTURED BY

# UpRight

# UpRight

## EUROPE

Pottery Road, Dun Laoire, Ireland.

Tel: +353 1 202 4100

Fax: +353 1 202 4102

Internet: <http://www.uprighteuro.com>